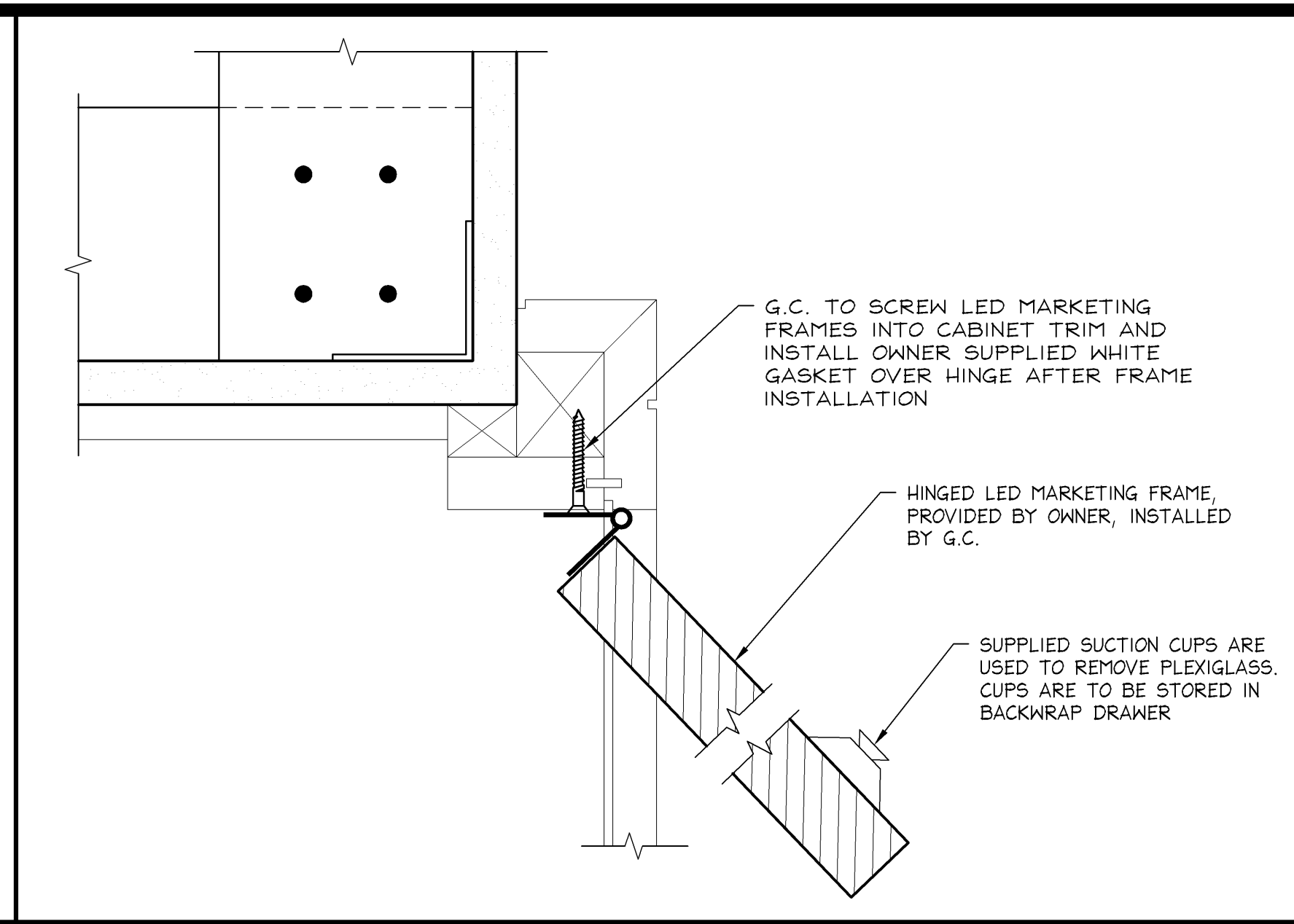
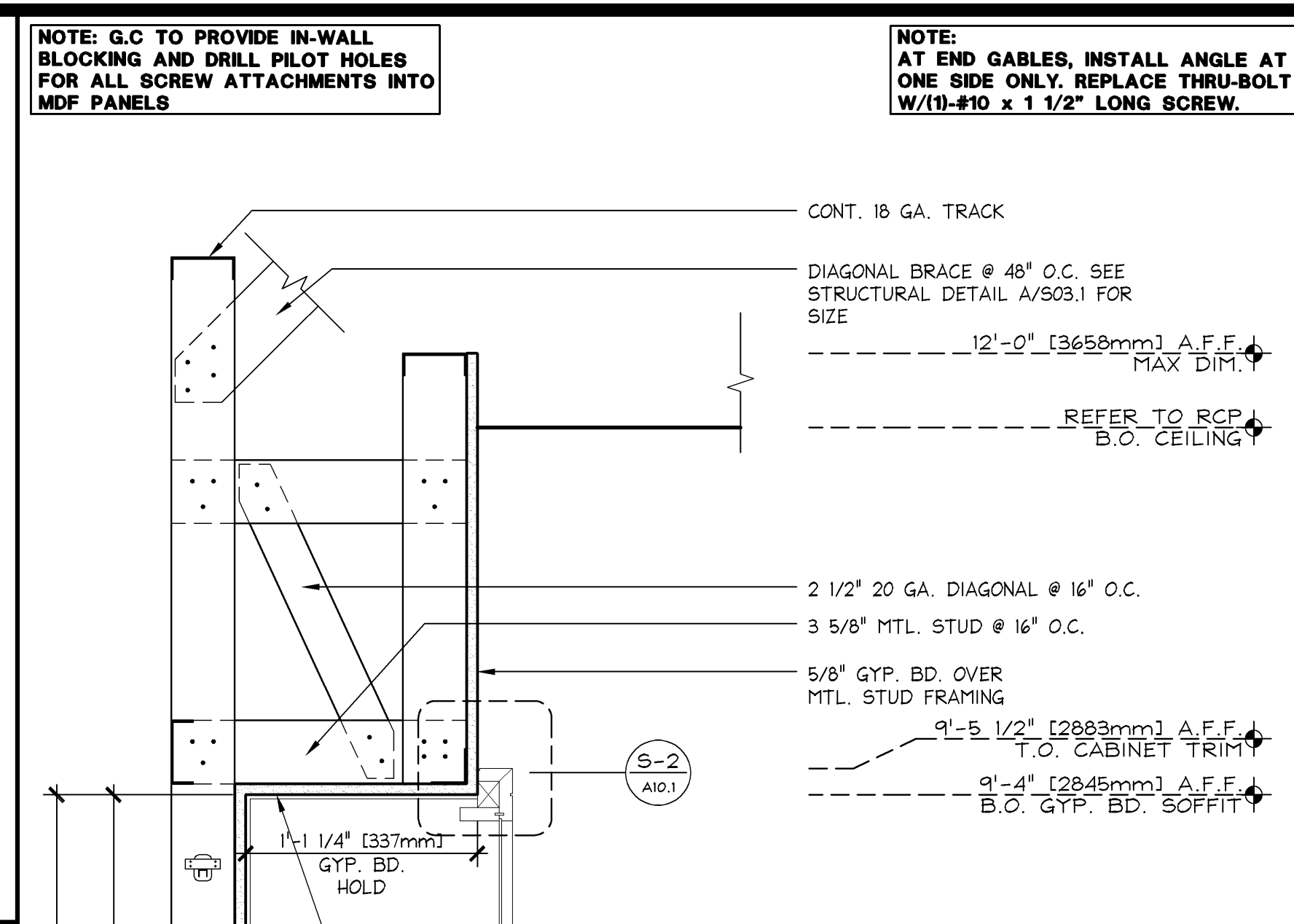


**CABINET TRIM DETAILS** **6\"/>**



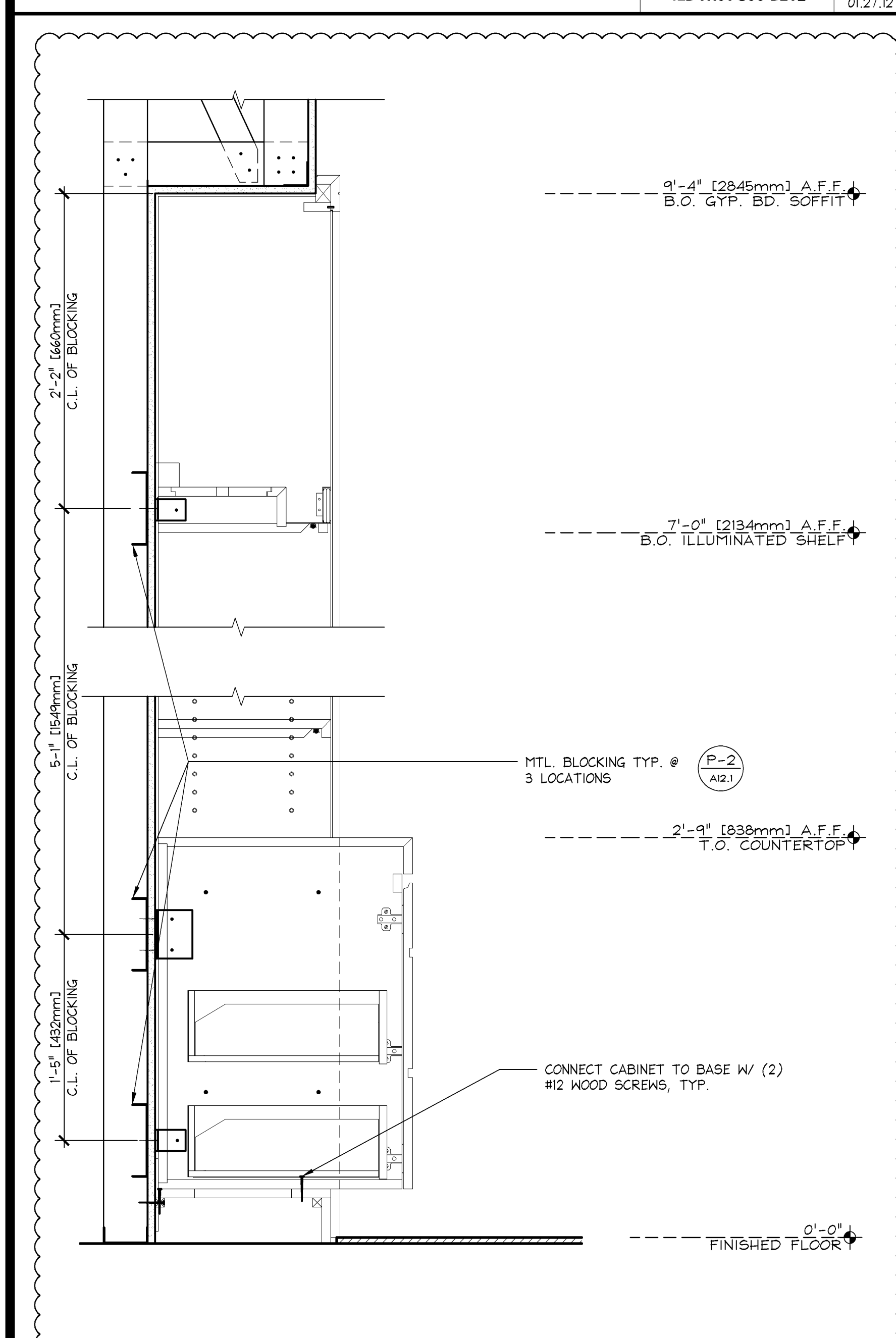
**HINGED MARKETING FRAME INSTALLATION DETAILS** **6\"/>**



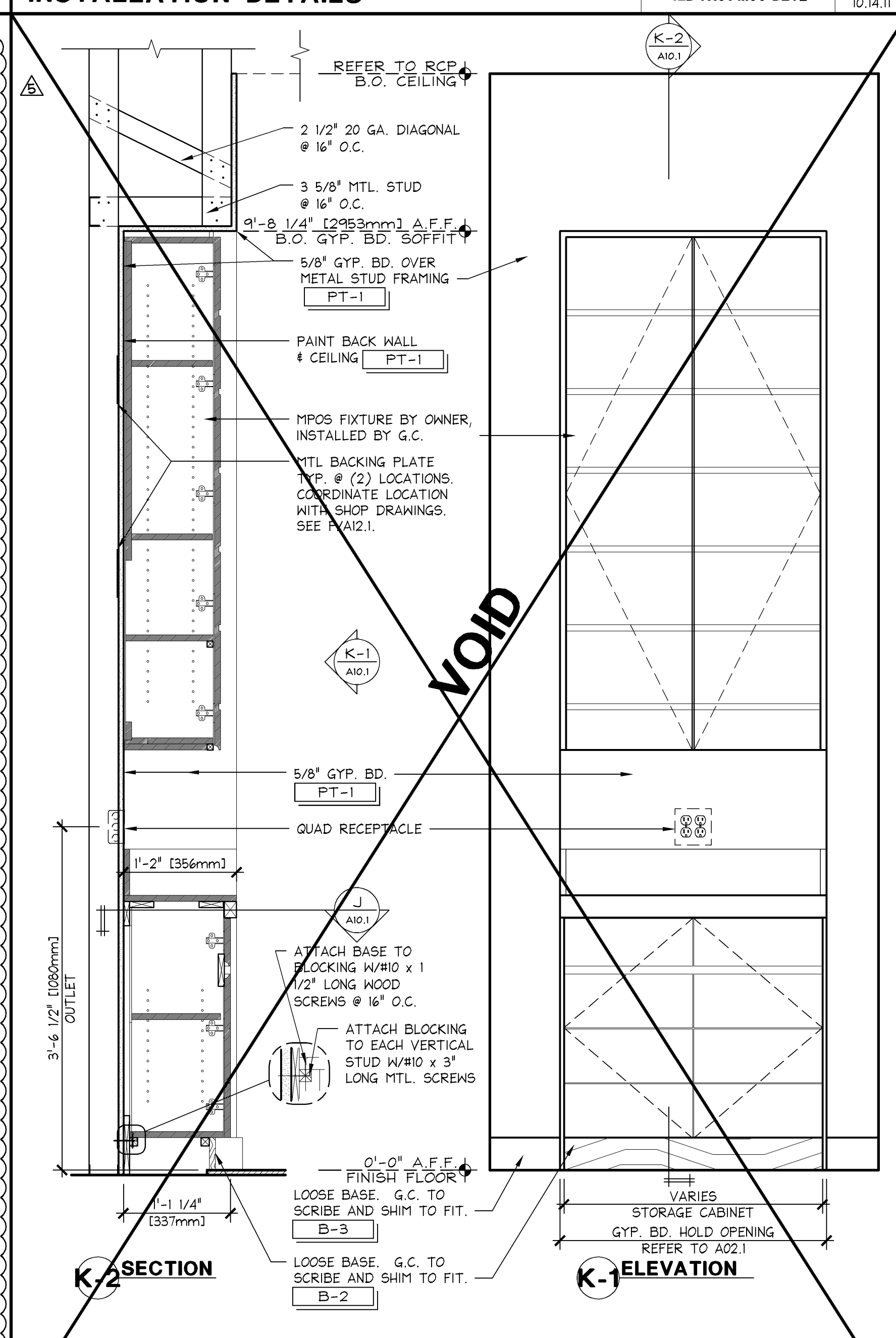
**SECTION @ "UNIT 1"** **1 1/2\"/>**

- UNIT 1 CABINET INSTALLATION GUIDELINES**
- THE SOFFIT HEIGHT SHOULD BE SET FROM THE HIGHEST POINT OF THE SLAB AND MAINTAINED LEVEL THROUGHOUT THE STORE UNLESS NOTED OTHERWISE.
  - FINISHED CABINET BAY DEPTH TO BE 1'-1 1/4" FOR UNIT 1 CABINETS, 1'-5 3/4" FOR UNIT 1H CABINETS.
  - OUTSIDE CORNERS OF GYPSUM BOARD CABINET BAY THAT RECEIVE PERIMETER TRIM DO NOT RECEIVE CORNER BEAD.
  - INSTALL AND SHIM PLATFORMS SO THE TOP OF THE PLATFORM IS 8'-11 3/4" FROM THE UNDERSIDE OF THE SOFFIT. BACK OF PLATFORM TO BE 1/4" AWAY FROM THE FACE OF THE GYPSUM BOARD RECESS.
  - SET VERTICAL GABLES BY SCREWING STEEL ANGLES INTO IN WALL BLOCKING. LEAVE GABLES LOOSE. THERE SHOULD BE A 1/4" GAP BETWEEN THE TOP OF THE GABLE AND THE UNDERSIDE OF THE SOFFIT.
  - INSTALL PERIMETER CABINET TRIM. SLIDE GABLE SO THAT THE FRONT FACE OF THE GABLE ALIGNS WITH THE FACE OF THE TRIM. THIS WILL LEAVE A SMALL GAP BETWEEN THE BACK OF THE GABLE AND THE FACE OF THE GYPSUM BOARD WALL.
  - SCREW STEEL ANGLES TO THE GABLES. SCREWS IN LOWER BRACKET AT GABLE MUST SEAT FLUSH IN COUNTERSINK TO ALLOW SUFFICIENT SPACE TO INSTALL BASE CABINETS.
  - DRILL PILOT HOLE AT 45 DEGREES THROUGH TOP OF CABINET TRIM, BLOCKING AND TOP OF EACH GABLE TO ACCEPT A 3" #10 SCREW.
  - SCRIBE BASE TIGHT TO FLOOR AND INSTALL WITH FACE OF BASE ALIGNED FLUSH WITH FACE OF GABLES.
  - INSTALL BASE CABINETS PER DRAWINGS. THE BASE CABINET SIDES SHALL HAVE EQUAL GAPS BETWEEN THE GABLES AND THE BACK SHALL FIT TIGHT TO THE STEEL ANGLES, LEAVING A SMALL GAP BETWEEN THE CABINET AND THE WALL. USE CAUTION WHEN SCREWING THROUGH CABINET SIDES INTO GABLES TO ENSURE THAT CABINET SIDES DO NOT BOW OUTWARD.
- NOTES: DRYWALL SCREWS ARE NOT ACCEPTABLE FOR ANY STEPS IN CABINET INSTALLATION. DO NOT CAULK THE QUIRK BETWEEN THE WALL AND THE PERIMETER TRIM, UNLESS DIRECTED BY THE OWNER.

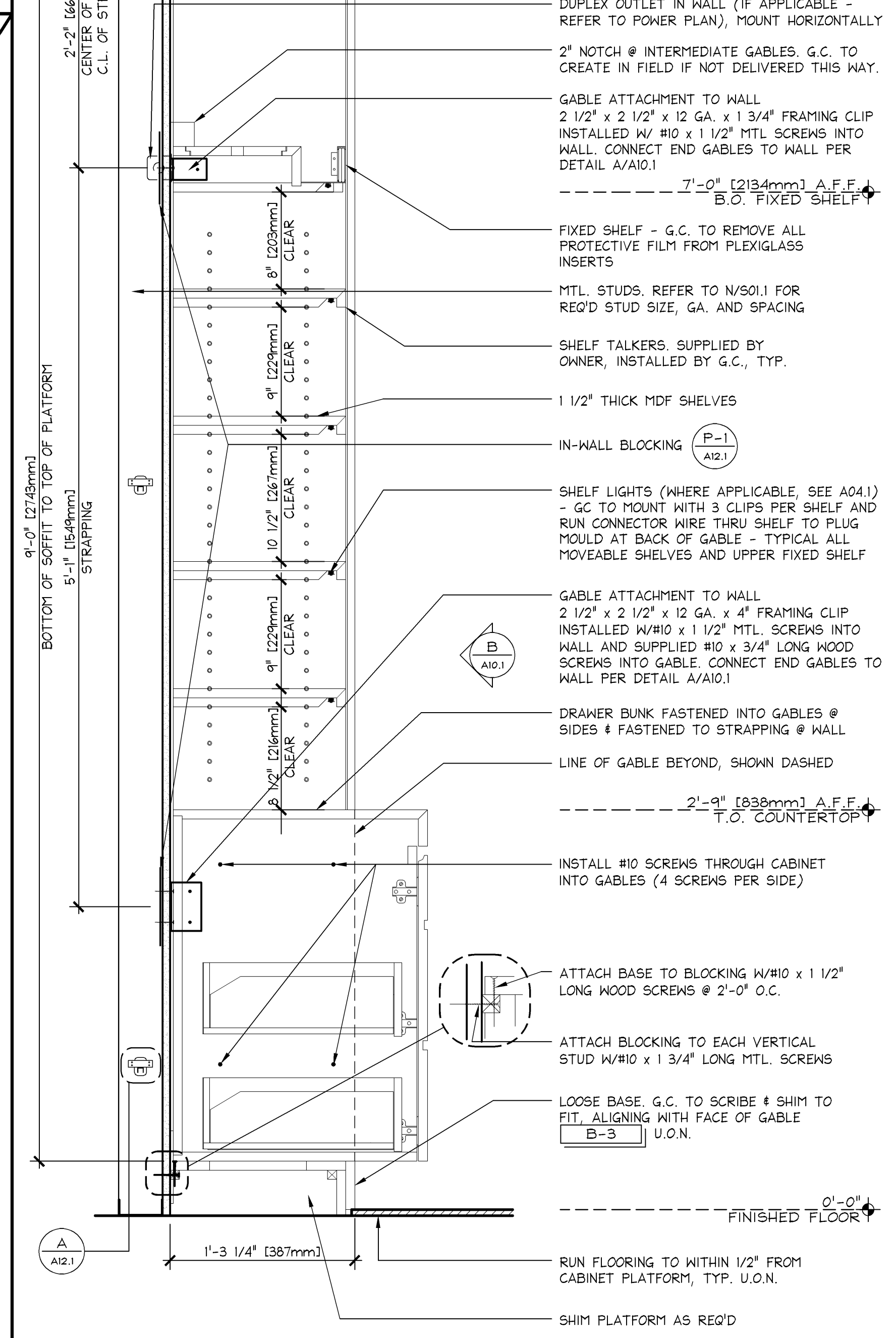
**UNIT 1 INSTALLATION GUIDELINES** **1/4\"/>**



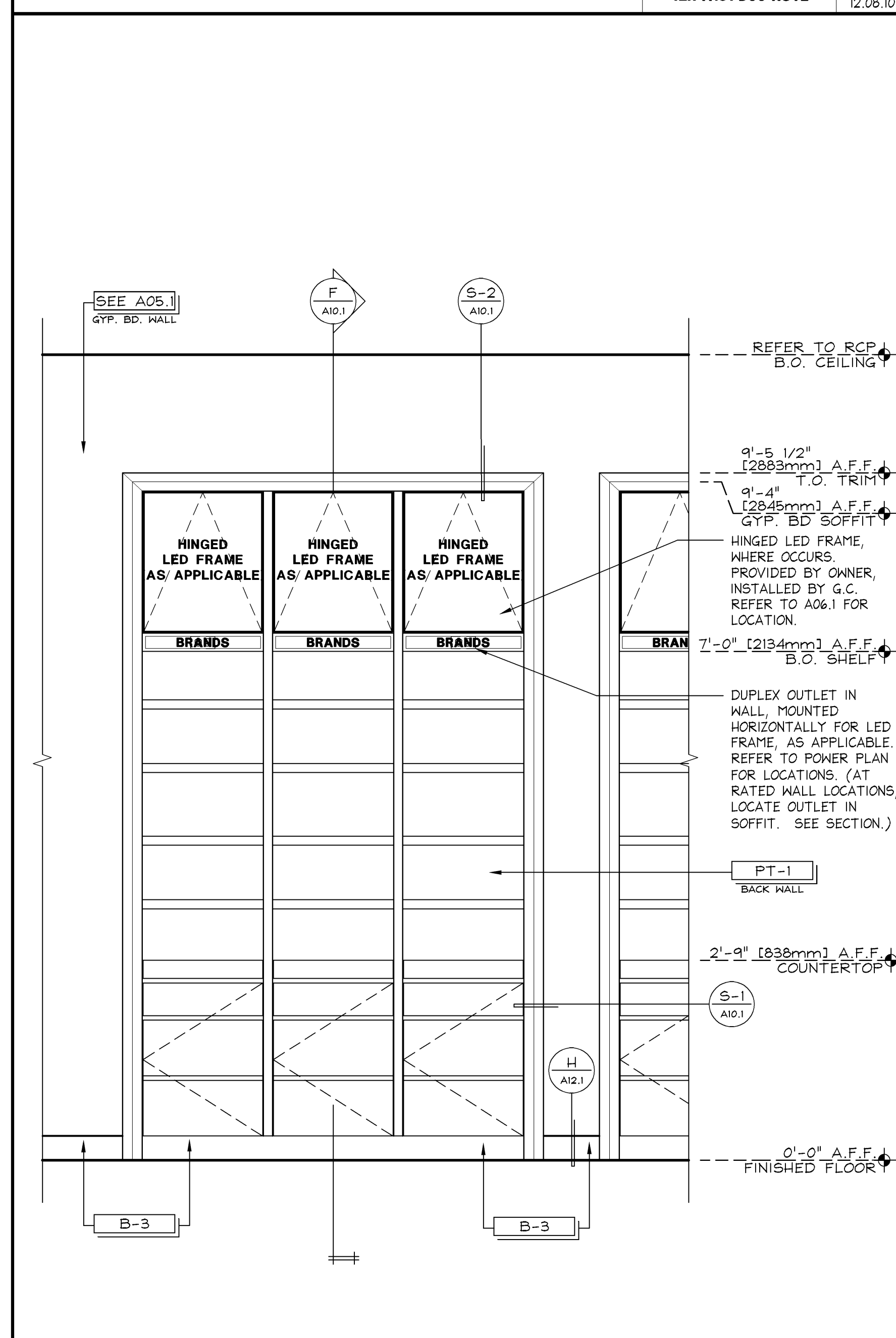
**"UNIT 1" SEISMIC ADDITIONS (HIGH SEISMIC DESIGN CAT D, E & F)** **1 1/2\"/>**



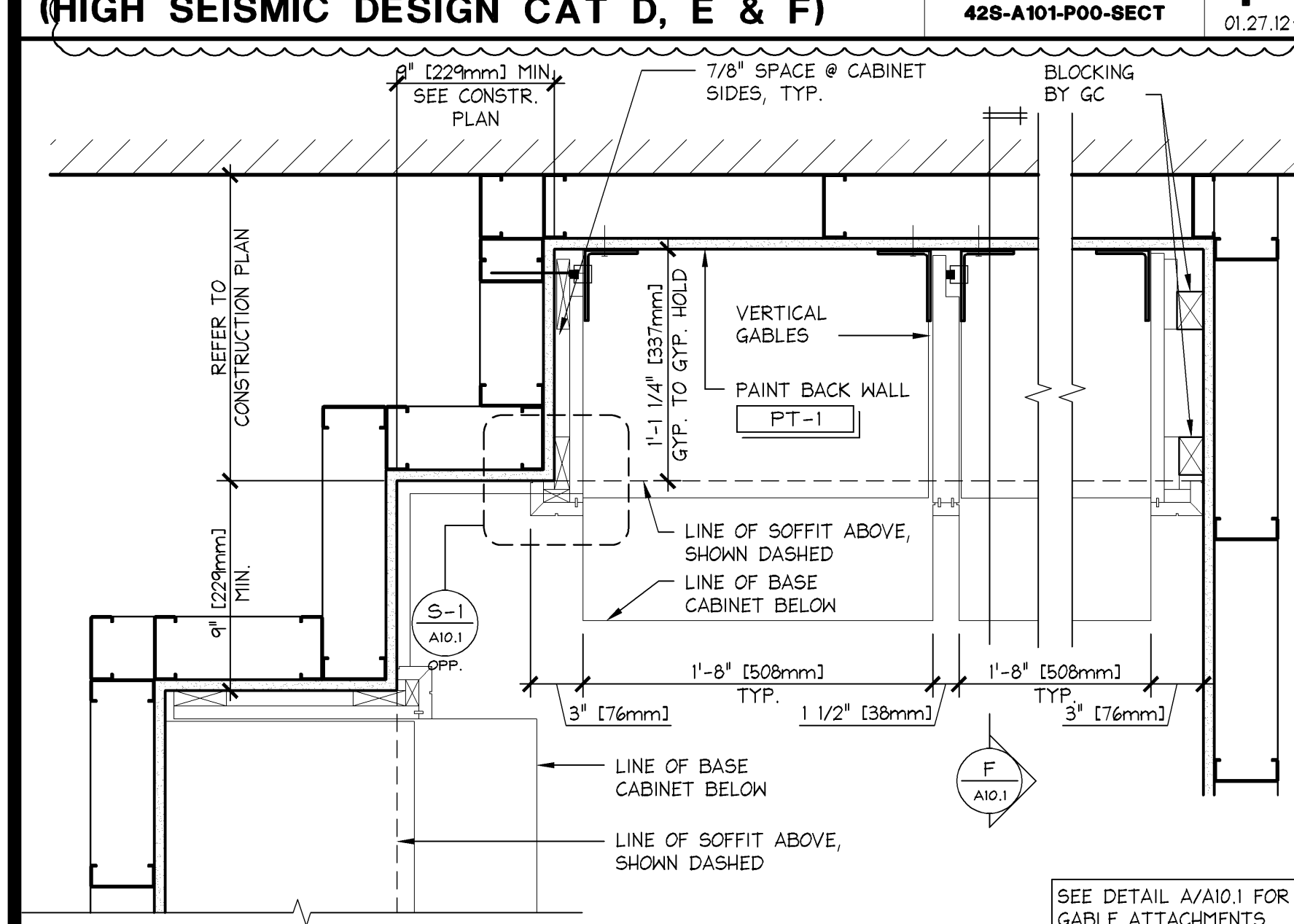
**STORAGE CABINET DETAILS (FF-44)** **1\"/>**



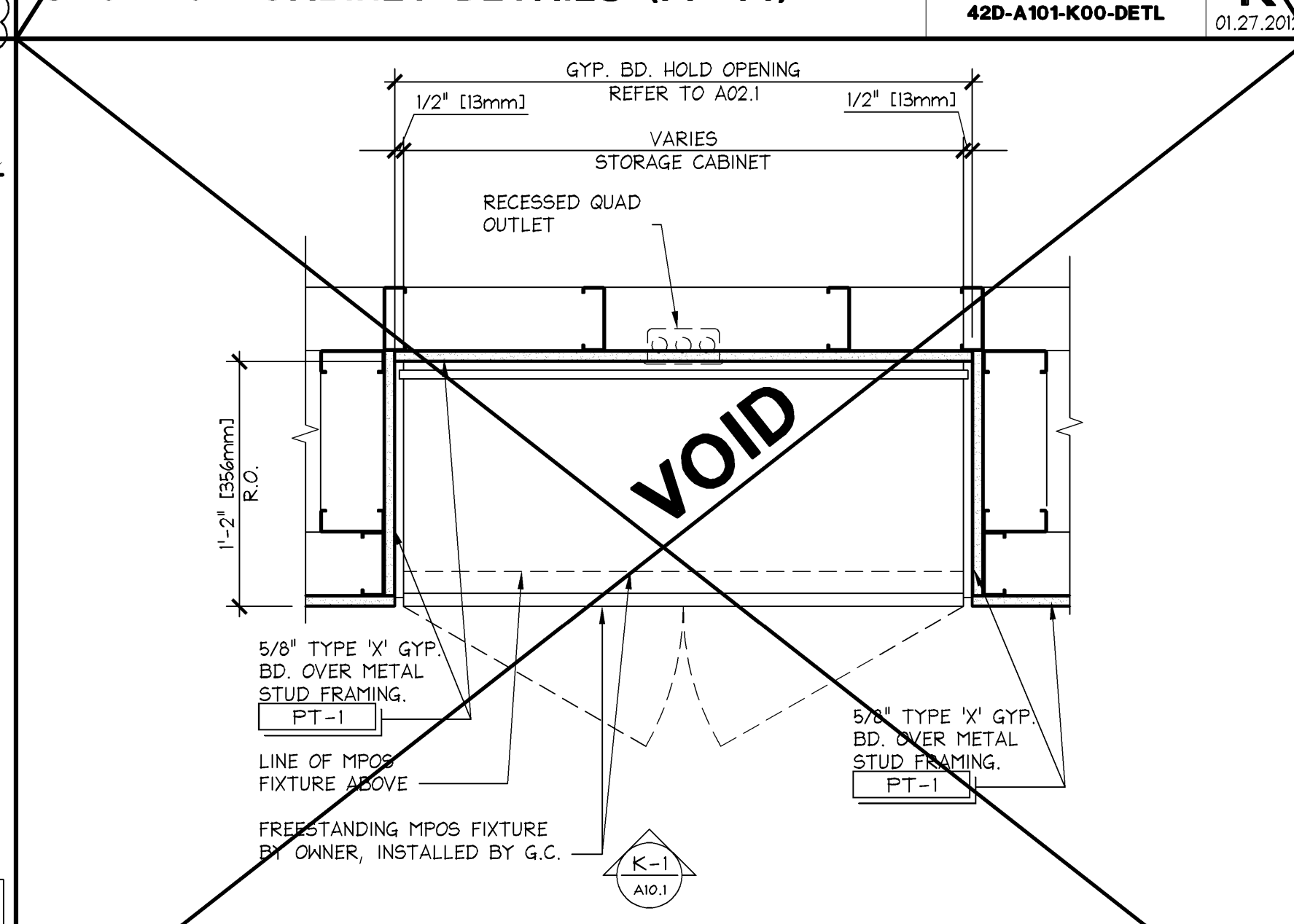
**SECTION @ "UNIT 1"** **1 1/2\"/>**



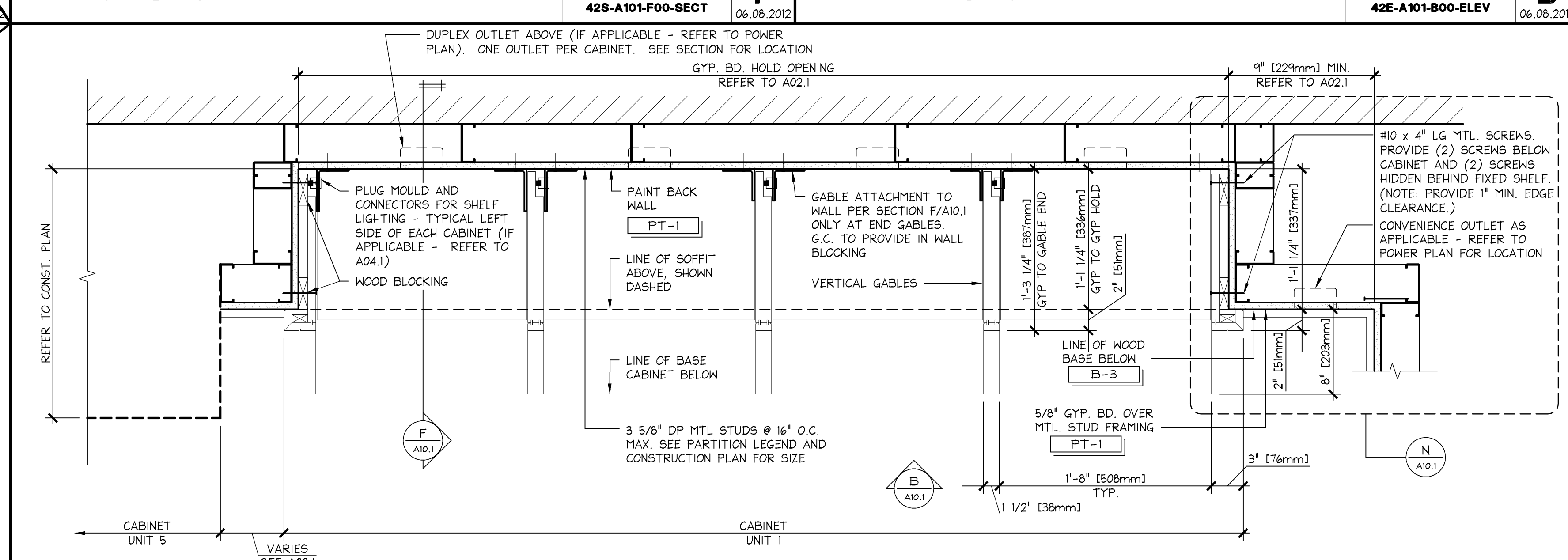
**ELEVATION @ "UNIT 1"** **3/4\"/>**



**END CONDITIONS @ "UNIT 1"** **1 1/2\"/>**



**STORAGE CABINET PLAN (FF-44)** **1 1/2\"/>**



**ENLARGED PLAN @ "UNIT 1"** **1 1/2\"/>**

Shremshock Architects, Inc.  
6130 S. Sanbury Rd., Westerville, OH 43081  
T: 614 545 4550 | F: 614 545 4555 | shremshock.com  
Gerald S. Shremshock, Architect  
Timothy J. Shremshock, Architect

ELITE CONSTRUCTION GROUP  
LANSING, MI 48201  
PHONE: 979-284-0712  
NOTE: THESE PRINTS HAVE BEEN  
REDUCED BY 50 PERCENT. SCALE  
WILL BE 50 PERCENT OF WHAT IS  
NOTED ON PLANS.

**limitedbrands**

**LIMITED STORE PLANNING, INC.**  
**d/b/a STORE DESIGN & CONSTRUCTION**  
Three Limited Parkway • Columbus, Ohio 43230  
Telephone: 614.415.7000 • Fax: 614.415.7349

**24200161**

**BATH & BODY WORKS**

**THE GALLERIA II**  
SPACE 101, 102, 103, 104, 105, 106, 107, 108, 109, 110, 111, 112, 113, 114, 115, 116, 117, 118, 119, 120, 121, 122, 123, 124, 125, 126, 127, 128, 129, 130, 131, 132, 133, 134, 135, 136, 137, 138, 139, 140, 141, 142, 143, 144, 145, 146, 147, 148, 149, 150, 151, 152, 153, 154, 155, 156, 157, 158, 159, 160, 161, 162, 163, 164, 165, 166, 167, 168, 169, 170, 171, 172, 173, 174, 175, 176, 177, 178, 179, 180, 181, 182, 183, 184, 185, 186, 187, 188, 189, 190, 191, 192, 193, 194, 195, 196, 197, 198, 199, 200, 201, 202, 203, 204, 205, 206, 207, 208, 209, 210, 211, 212, 213, 214, 215, 216, 217, 218, 219, 220, 221, 222, 223, 224, 225, 226, 227, 228, 229, 230, 231, 232, 233, 234, 235, 236, 237, 238, 239, 240, 241, 242, 243, 244, 245, 246, 247, 248, 249, 250, 251, 252, 253, 254, 255, 256, 257, 258, 259, 260, 261, 262, 263, 264, 265, 266, 267, 268, 269, 270, 271, 272, 273, 274, 275, 276, 277, 278, 279, 280, 281, 282, 283, 284, 285, 286, 287, 288, 289, 290, 291, 292, 293, 294, 295, 296, 297, 298, 299, 300, 301, 302, 303, 304, 305, 306, 307, 308, 309, 310, 311, 312, 313, 314, 315, 316, 317, 318, 319, 320, 321, 322, 323, 324, 325, 326, 327, 328, 329, 330, 331, 332, 333, 334, 335, 336, 337, 338, 339, 340, 341, 342, 343, 344, 345, 346, 347, 348, 349, 350, 351, 352, 353, 354, 355, 356, 357, 358, 359, 360, 361, 362, 363, 364, 365, 366, 367, 368, 369, 370, 371, 372, 373, 374, 375, 376, 377, 378, 379, 380, 381, 382, 383, 384, 385, 386, 387, 388, 389, 390, 391, 392, 393, 394, 395, 396, 397, 398, 399, 400, 401, 402, 403, 404, 405, 406, 407, 408, 409, 410, 411, 412, 413, 414, 415, 416, 417, 418, 419, 420, 421, 422, 423, 424, 425, 426, 427, 428, 429, 430, 431, 432, 433, 434, 435, 436, 437, 438, 439, 440, 441, 442, 443, 444, 445, 446, 447, 448, 449, 450, 451, 452, 453, 454, 455, 456, 457, 458, 459, 460, 461, 462, 463, 464, 465, 466, 467, 468, 469, 470, 471, 472, 473, 474, 475, 476, 477, 478, 479, 480, 481, 482, 483, 484, 485, 486, 487, 488, 489, 490, 491, 492, 493, 494, 495, 496, 497, 498, 499, 500, 501, 502, 503, 504, 505, 506, 507, 508, 509, 510, 511, 512, 513, 514, 515, 516, 517, 518, 519, 520, 521, 522, 523, 524, 525, 526, 527, 528, 529, 530, 531, 532, 533, 534, 535, 536, 537, 538, 539, 540, 541, 542, 543, 544, 545, 546, 547, 548, 549, 550, 551, 552, 553, 554, 555, 556, 557, 558, 559, 560, 561, 562, 563, 564, 565, 566, 567, 568, 569, 570, 571, 572, 573, 574, 575, 576, 577, 578, 579, 580, 581, 582, 583, 584, 585, 586, 587, 588, 589, 590, 591, 592, 593, 594, 595, 596, 597, 598, 599, 600, 601, 602, 603, 604, 605, 606, 607, 608, 609, 610, 611, 612, 613, 614, 615, 616, 617, 618, 619, 620, 621, 622, 623, 624, 625, 626, 627, 628, 629, 630, 631, 632, 633, 634, 635, 636, 637, 638, 639, 640, 641, 642, 643, 644, 645, 646, 647, 648, 649, 650, 651, 652, 653, 654, 655, 656, 657, 658, 659, 660, 661, 662, 663, 664, 665, 666, 667, 668, 669, 670, 671, 672, 673, 674, 675, 676, 677, 678, 679, 680, 681, 682, 683, 684, 685, 686, 687, 688, 689, 690, 691, 692, 693, 694, 695, 696, 697, 698, 699, 700, 701, 702, 703, 704, 705, 706, 707, 708, 709, 710, 711, 712, 713, 714, 715, 716, 717, 718, 719, 720, 721, 722, 723, 724, 725, 726, 727, 728, 729, 730, 731, 732, 733, 734, 735, 736, 737, 738, 739, 740, 741, 742, 743, 744, 745, 746, 747, 748, 749, 750, 751, 752, 753, 754, 755, 756, 757, 758, 759, 760, 761, 762, 763, 764, 765, 766, 767, 768, 769, 770, 771, 772, 773, 774, 775, 776, 777, 778, 779, 780, 781, 782, 783, 784, 785, 786, 787, 788, 789, 790, 791, 792, 793, 794, 795, 796, 797, 798, 799, 800, 801, 802, 803, 804, 805, 806, 807, 808, 809, 810, 811, 812, 813, 814, 815, 816, 817, 818, 819, 820, 821, 822, 823, 824, 825, 826, 827, 828, 829, 830, 831, 832, 833, 834, 835, 836, 837, 838, 839, 840, 841, 842, 843, 844, 845, 846, 847, 848, 849, 850, 851, 852, 853, 854, 855, 856, 857, 858, 859, 860, 861, 862, 863, 864, 865, 866, 867, 868, 869, 870, 871, 872, 873, 874, 875, 876, 877, 878, 879, 880, 881, 882, 883, 884, 885, 886, 887, 888, 889, 890, 891, 892, 893, 894, 895, 896, 897, 898, 899, 900, 901, 902, 903, 904, 905, 906, 907, 908, 909, 910, 911, 912, 913, 914, 915, 916, 917, 918, 919, 920, 921, 922, 923, 924, 925, 926, 927, 928, 929, 930, 931, 932, 933, 934, 935, 936, 937, 938, 939, 940, 941, 942, 943, 944, 945, 946, 947, 948, 949, 950, 951, 952, 953, 954, 955, 956, 957, 958, 959, 960, 961, 962, 963, 964, 965, 966, 967, 968, 969, 970, 971, 972, 973, 974, 975, 976, 977, 978, 979, 980, 981, 982, 983, 984, 985, 986, 987, 988, 989, 990, 991, 992, 993, 994, 995, 996, 997, 998, 999, 1000.